

LA-6787-MS

Informal Report

UC-38

Issued: April 1977

C.3

**CIC-14 REPORT COLLECTION
REPRODUCTION
COPY**

**Seismic Qualification of Equipment for the
TA-55 Plutonium Processing Facility**




Philip R. Pellette
Elton G. Endebrock
Paul M. Giles
Richard H. Shaw



los alamos
scientific laboratory

of the University of California

LOS ALAMOS, NEW MEXICO 87545



An Affirmative Action/Equal Opportunity Employer

Printed in the United States of America. Available from
National Technical Information Service
U.S. Department of Commerce
5285 Port Royal Road
Springfield, VA 22161
Price: Printed Copy \$4.00 Microfiche \$3.00

This report was prepared as an account of work sponsored by the United States Government. Neither the United States nor the United States Energy Research and Development Administration, nor any of their employees, nor any of their contractors, subcontractors, or their employees, makes any warranty, express or implied, or assumes any legal liability or responsibility for the accuracy, completeness, or usefulness of any information, apparatus, product, or process disclosed, or represents that its use would not infringe privately owned rights.

LOS ALAMOS NATIONAL LABORATORY



3 9338 00396 4920

SEISMIC QUALIFICATION OF EQUIPMENT
FOR THE TA-55 PLUTONIUM PROCESSING FACILITY

by

Philip R. Pellette
Elton G. Endebrock
Paul M. Giles
Richard H. Shaw

ABSTRACT

This report discusses the techniques employed by the Los Alamos Scientific Laboratory (LASL) for the seismic qualification of internal equipment for the TA-55 Plutonium Facility. The structural analysis of the plutonium building and critical associated structures was performed by the Architect-Engineer (A-E), and the calculations were checked by LASL.

The specifications and procedures used by LASL produced dramatic improvement in the responses by qualified vendors to the seismic requirements. There was an increase from about a 20% bid ratio to greater than 90% because prospective vendors could be competitive without having had previous seismic experience with their equipment.

The equipment seismic qualification for TA-55 is in compliance with the Code of Federal Regulations, Nuclear Regulatory Commission (NRC) Guides, Energy Research and Development Administration (ERDA) Manual Chapters and Appendices, and Institute of Electrical and Electronic Engineers (IEEE) Standard 344.

I. INTRODUCTION

The TA-55 Plutonium Processing Facility is being constructed at LASL to accommodate future requirements for plutonium research and component fabrication in support of military, reactor, space power, and materials research programs. Modifications to the existing facilities to comply with the latest health and safety criteria were no longer considered feasible.¹

The following factors led to the selection of the site on Pajarito Road for the new facility.

- Proximity to the radioactive liquid waste treatment facility.
- Minimum impact on continuity of existing programs.
- Adequate area for support functions.
- Adequate natural drainage.
- Isolation from inhabited areas.
- Meteorology and seismology considerations.

Using the latest draft of ERDA's "Minimum Criteria for New Plutonium Facilities" as a guide, the Fluor Corporation, Los Angeles, CA, A-E for the facility, began studies to determine the probability of occurrences of natural phenomena in the area, such as earthquakes, and techniques for hardening the facility to withstand such occurrences. The Consulting Firm of Dames and Moore, Santa Barbara, CA, was hired by Fluor Corporation to study the proposed site and verify its acceptability under seismic considerations.

A. Minimum Criteria for New Plutonium Facilities

The criteria of ERDAM Appendix 6301, Part II, Sec. I, were in draft form at the time of this study, but it was considered important to take measures to insure that the new plutonium facility would be in accordance with the intent of that document. The criteria specified the following about seismic design resistance.

- Seismic parameters should be developed for the site, and Design Basis Earthquake (DBE) and Operating Basis Earthquake (OBE) should be defined.
- Critical sections of the structure should be designed to withstand the DBE.
- Critical systems, such as ventilation, fire protection, and utilities, should be designed to withstand the DBE.

B. Geologic, Hydrologic, and Seismic Investigation

The geologic features within 200 miles of the site and details of the immediate site area were studied. Dames and Moore² concluded that the proposed TA-55 site was suitable for the plutonium processing facility and the risks of future surface faulting or volcanism were minimal. Infrared aerial photographs, field mapping, and a geologic trench dug on the site were used to verify that there were no extensions of faults in the area.

Based on available data, Dames and Moore reported it was unlikely that earthquake motion greater than Intensity VI has ever been experienced at the site. The largest nearby earthquake of record was the 1918 Cerillos earthquake with an epicenter located approximately 35 miles to the southeast. Larger intensity earthquakes have been located farther south. However, the geologic and tectonic features of the Rio Grande rift indicate that larger earthquakes may be possible.

Dames and Moore proposed that the plutonium processing facilities be designed for two earthquake events: an OBE that would assume ground motion at the site of Intensity VII, but less than VIII, and a DBE with motion of Intensity VIII. Figures 1 and 2 illustrate the OBE and DBE response spectra used, which were derived from records of the 1935 Helena, MT, earthquake modified to fit the local dynamic soil properties. The acceleration-time histories from which the spectra were derived accompanied the Dames and Moore report. The DBE acceleration-time histories for the principal axes are shown in Figs. 3, 4, and 5.

C. Seismic Specifications

The Fluor Corporation contracted with Wyle Laboratories, Norco, CA, and Huntsville, AL, to generate a seismic specification for systems purchased for critical applications in the plutonium facility. The specification was based on the earthquake shock spectra derived by Dames and Moore, which were translated into test criteria that could be used by equipment manufacturers to qualify equipment by analytical and/or empirical techniques.

Wyle Laboratories produced a complete and comprehensive seismic specification that was included as an appendix to the internals package (J-package) specifications.³ The J-package specifications identified the critical TA-55 systems, but a breakdown to the component level of detail was not included. Several testing options were offered in the seismic specification, including biaxial and uniaxial independent motion in the two principal horizontal and vertical directions. Random motion, complex motion, acceleration-time history, sine beat, decaying sinusoid, and fragility level testing techniques were outlined. The technique of qualification of equipment by a combination of analysis and test was developed.

Wallace/Brown-Olds/Howard (W/B-O/H), a Los Alamos-based construction company, was contracted to purchase and install most of the internal equipment

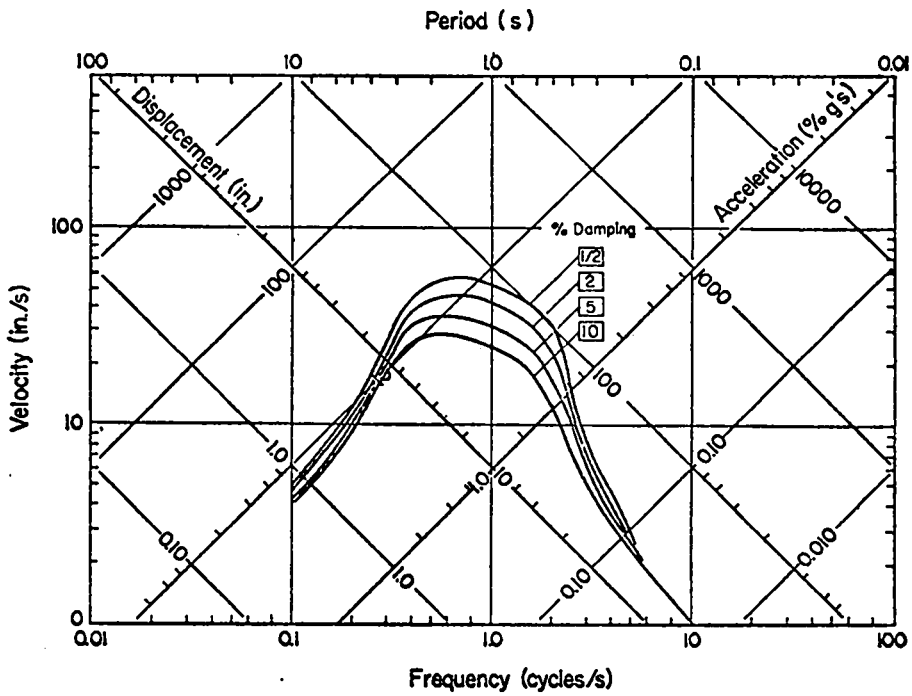


Fig. 1. Recommended smoothed response spectra, OBE.

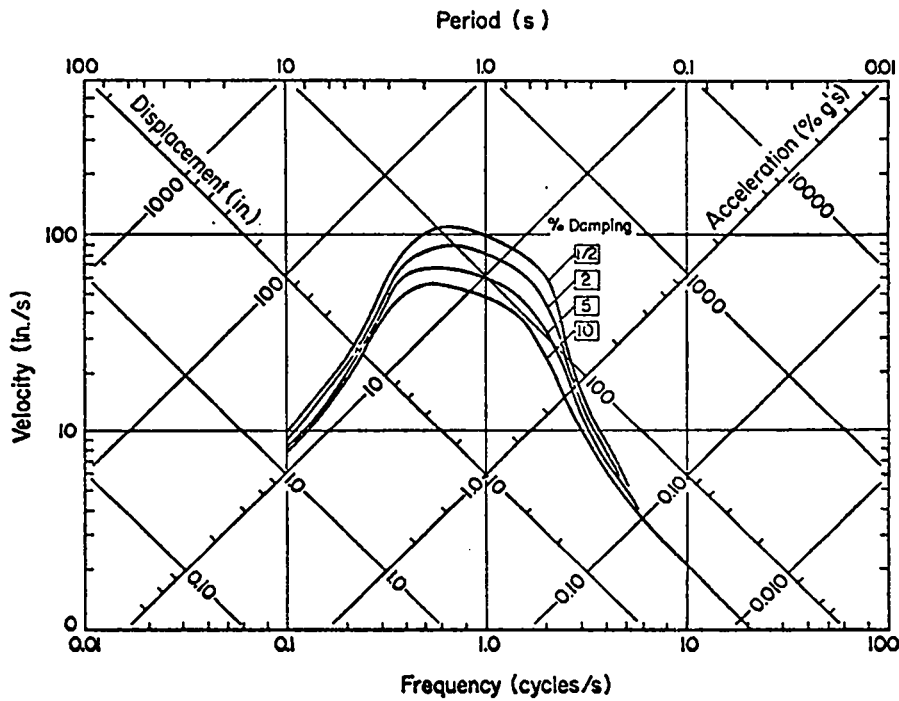


Fig. 2. Recommended smoothed response spectra, DBE.

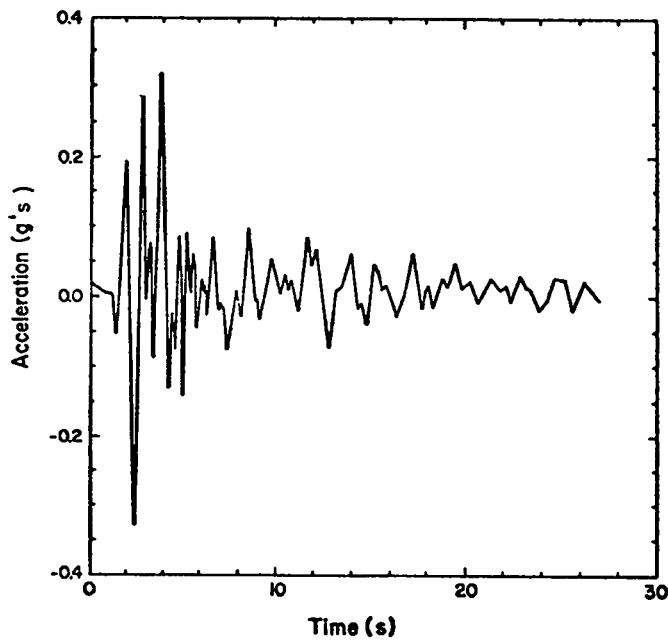


Fig. 3. DBE at Los Alamos, vertical component.

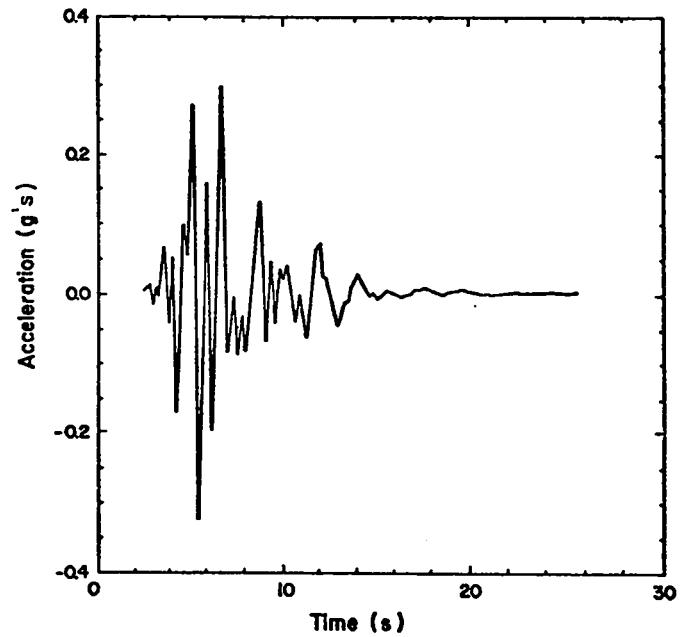


Fig. 4. DBE at Los Alamos, horizontal component No. 1.

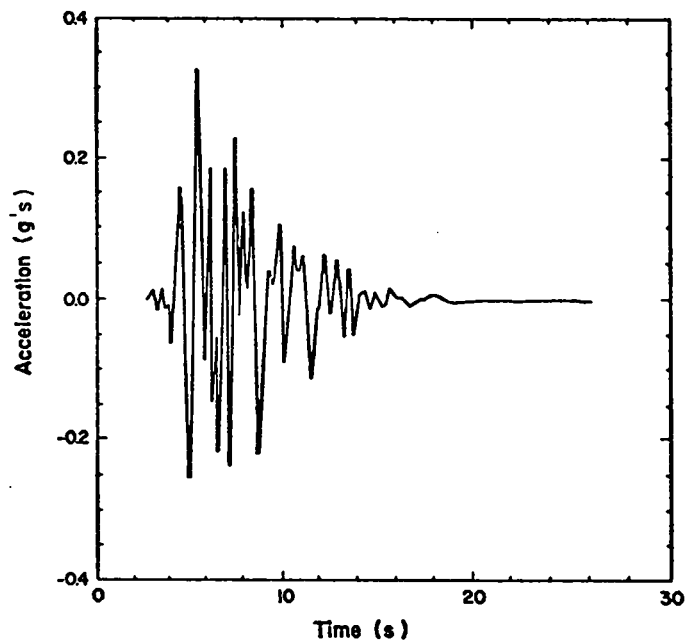


Fig. 5. DBE at Los Alamos, horizontal component No. 2.

in TA-55 per the appropriate drawings. Some equipment was purchased by LASL as Government-Furnished Equipment (GFE) and installed by W/B-O/H.

When the Fluor seismic specification was included with the initial Request for Quotation (RFQ) documents to purchase internal TA-55 equipment, the industry reaction was less than desirable. Often vendors simply failed to bid and then responded to later inquiries by saying that the seismic criteria had "scared them off." Reference 4 outlines the problems encountered in purchasing the diesel-driven fire water pump and some of the electrical gear. The fire pump RFQ was sent to seven prospective suppliers; two bids were received and both took many exceptions to the seismic requirements. Experience purchasing other critical components was similar. Sometimes, where seismic qualification was included in the bid, the qualification cost increased the component cost by several times.

II. LASL SEISMIC QUALIFICATION APPROACH

A. Summary

Group WX-4 (previously ENG-6) employed a combination of analytical and test techniques to solve the problem of seismic qualification of TA-55 equipment. Initially, the seismic specification was rewritten⁵ clarifying the seismic requirements to make them comprehensible to the uninitiated vendor, thereby allowing him to bid competitively. A breakdown was performed of each critical system to the critical component level, and a new seismic specification was generated for use with RFQ's. A seismic test facility at White Sands Missile Range (WSMR), White Sands, NM, was modified to reproduce the LASL earthquake motions.

B. Seismic Classifications

It was evident from the outset that a complete list had to be made of all components vital to the functioning of the critical systems of TA-55. This was accomplished by thoroughly reviewing the A-E Title III drawings. Items were classified I (DBE) or II (OBE), depending on whether the system must function during and immediately following the larger DBE or must only sustain the smaller OBE. The fire water system, for example, must be qualified for the DBE because a fire and/or earthquake are credible. Many heating and ventilating (H&V) system valves and dampers would be required to continue operating after the smaller (more probable) OBE, thereby reducing the time required to get the

plant back into operation. These same valves and dampers would not be qualified for the DBE because the building structure is designed to supply containment following the larger earthquake.

Two additional classifications, "operative" and "structural," were assigned to each item. The diesel-driven fire pump, for example, might be required to start and run during a DBE. The electrical fire pump in the same system, however, would only have to maintain structural integrity, thus preventing a large system leak. This difference produced a considerable saving in individual test cost. An operative test usually costs more because a functional check has to be performed before and after the seismic event, or the unit has to be operated throughout the seismic test. For some items, such as the fire pump, the cost of plumbing, valves, and tanks was appreciable.

The complete list of critical components and assigned qualification levels were included in the new seismic specification No. 4401-J-1. Appendix A is an excerpt from the latest version of the specification.

C. Multiple Bid Options

A multiple bid quotation form with the following options was written to encourage potential bidders with varying degrees of experience about the performance of their material in the seismic environment.

1. Quotation for equipment, including test data resulting from previous similar applications of the equipment.
2. Quotation for equipment, including analyses or test data to demonstrate that the equipment will meet the acceleration-time histories.
3. Quotation for equipment that will be qualified by shake table tests as described in this specification.
4. Quotation for equipment that may not meet the earthquake conditions outlined in this specification. Any available information shall be included with the quotation.

Bidders had the option to submit alternate quotations on any or all of the four conditions outlined above. With such options, a qualified bidder could remain competitive whether or not he had previous seismic experience. Since using the LASL seismic specification and this quotation form, the vendor response has grown from 15-20% to 90-95%.

D. Seismic Specifications

A separate specification was written for each component classification mentioned in Sec. II,B. Each was greatly simplified and easier for the

average equipment supplier to understand. Any past seismic experience with the equipment was declared to be of interest and would aid the purchaser in assessing the behavior of the equipment during an earthquake.

If the supplier selected to qualify his equipment by test, either the smooth response spectra or the acceleration-time histories could be used, and both were presented with the specification. As a sample, the recommended specification for the Class I Operative Equipment is shown in Fig. 6.

Note that, although the new specification offered the supplier more options for bidding and qualification, no reduction in the seismic levels required to be sustained for qualification was suggested or tolerated. With this approach, some of the burden for seismic qualification could be shared by the purchaser at an appropriate reduction in equipment cost.

III. SEISMIC QUALIFICATION BY TESTING

A. WSMR

Because the new approach to seismic bid options encouraged vendors to quote without concern for seismic qualification, it was necessary to subject various components to the TA-55 seismic spectra. A survey of local test facilities was undertaken, which included LASL; Kirtland Air Force Base, Albuquerque, NM; Sandia Corporation, Albuquerque, NM; and WSMR. At WSMR, it was learned that equipment was available with roughly the required capabilities, that is, a controlled test table large enough to support several tons of equipment and move in the low-frequency (0-100 Hz) range with large displacements (2-10 in.). This equipment was located at the "300-K" and "LC-33" test sites, and was formerly used to test missiles, warheads, associated trailers, and shipping containers. The facilities were centrally controlled with modern, sophisticated electronic instrumentation. Fortunately, the workload at these sites was compatible with our test schedule, and a more complete study verified that this equipment could reproduce the motions required by the TA-55 earthquake spectra.

WSMR submitted a proposal to LASL to modify the 300-K test site for the earthquake testing of equipment. It included the assembly of separate horizontal and vertical test tables, sized to accept all the anticipated items except the emergency generator and plant air compressors. These units would be considered an anomaly to the normal test requirements. All the other equipment,

Class I Operative Equipment

The equipment will be installed in a facility located in a potentially seismic area. The smooth response spectra shown in Fig. 2 have been generated from a seismic analysis of the site and buildings to represent the Safe Shutdown Earthquake (SSE), also referred to as the Design Basis Earthquake (DBE). The equipment would be required to remain operative during and immediately following such an event. Preference will thus be given to those suppliers who can show that their equipment, supported as the supplier recommends that it can be supported in the facility, will continue to function normally during and immediately after being subjected to the SSE.

It is anticipated that some suppliers will have test data or analyses available, resulting from previous similar applications of their equipment. These vendors are encouraged to submit the available information for consideration with their proposals. The information can then be used to determine what level of qualification testing or analysis remains to be performed by the purchaser prior to installation of the equipment.

Three components of ground acceleration have been generated to represent this SSE and are shown in Figs. 3, 4, and 5. The acceleration-time histories of the three components are available in digitized form on computer cards and may be obtained on request. Suppliers may demonstrate the performance of their equipment by rational analysis, test results, or a combination of both. Either the response spectra shown in Fig. 2 or these time-histories may be used in this demonstration.

If suppliers wish to qualify their equipment by test, the time-histories shown in Figs. 3, 4, and 5 should be applied simultaneously if a triaxial shaking table is available. If a biaxial shaking table is used, the horizontal components should be increased in intensity by 20% and applied to the principal horizontal axes of the equipment, in turn, simultaneously with the vertical component. If a uniaxial shaking table is used, the components should be increased in intensity by 30% and applied to each principal axis of the equipment, in turn. In testing, the SSE should be preceded by three OBEs; an OBE has one-half the acceleration intensity of the SSE. Testing costs should be indicated in the bid cost breakdown.

Suppliers who cannot demonstrate the performance of their equipment for the SSE should supply whatever evidence they may have that would assist the purchaser in assessing the behavior of their equipment during an earthquake. If available, they should supply the natural frequencies and associated damping factors of the fundamental mode of the equipment in the vertical and in the two principal horizontal directions. They should also provide, if available, the highest acceleration at which their equipment will continue to operate, at various exciting frequencies (fragility test results).

Fig. 6. Sample of the recommended specification for the Class I Operative Equipment.

from small 1-in. valves to the entire diesel-driven fire pump, was included in the WSMR planning. All existing test equipment at WSMR, as government equipment, incurs no charge to the user, and a nominal labor charge is made for work performed by the WSMR civilian personnel (\$13 per man-hour for FY 1977) during setup and functional or seismic testing.

The modifications to the WSMR 300-K site were accomplished and the facility now has the following capabilities.

- Mode of operation: One vertical table and one horizontal table, each single axis input, quick change.
- Table dimensions : Vertical 3 ft by 8 ft.
Horizontal 6-1/2 ft by 6-1/2 ft.
- Maximum specimen size : Vertical 8 ft long, 3 ft wide, 7 ft high.
Horizontal 10 ft long, 7 ft wide, 10 ft high.
- Maximum specimen weight : 12,000 lbs at 1/2 g's.
- Maximum displacement : 10-in. double amplitude.
- Maximum velocity : 120 in./s.
- Maximum acceleration : 3 g's.
- Maximum frequency: 500 Hz.

Although the 300-K area is presently providing the LASL OBE and DBE acceleration-time histories, adjustment to other levels and modes of testing could be easily accomplished. A similar capability of low-frequency/high-displacement testing exists at the LC-33 site, where the maximum specimen weight is 80,000 lbs at 0.5 g's, and the maximum displacement is 4-in. double amplitude.

B. Wyle Laboratories, Huntsville, AL, and Norco, CA, Facilities

Some of the vendors chose to supply seismic certification with their submittals, and their quotations reflected test programs to be conducted at the Wyle test facilities. Both Wyle locations offer independent dual-axis shaking tables with complete control and measurement instrumentation. The I-T-E emergency substation units were tested at the Wyle facility, Huntsville, AL; the multiplexers and the uninterruptible power supply were tested at Norco, CA.

C. Earthquake Engineering Research Center (EERC), Richmond, CA

The emergency generator was successfully tested during the week of January 3, 1977. The diesel-driven unit, associated batteries, and controller, were subjected to three OBE and one DBE intensity earthquake motions in two axes (vertical and horizontal), simultaneously. The unit was then rotated 90° on the table and the test was repeated. A sine sweep between 1 and 20 Hz at an intensity of 0.5 g's was introduced in each principal axis independently to determine the natural frequencies of the assembly and components. The generator was operated under a simulated load bank prior to and following each series of tests.

The central feature of the EERC laboratory is the 20-ft by 20-ft shaking table used to study the earthquake response behavior of test specimens vibrating at amplitudes large enough to cause inelastic deformations. The table can move in the vertical and in one horizontal degree-of-freedom. It may be used to subject structures weighing up to 100,000 lbs to horizontal motions of about twice the intensity of the north-south component of the El Centro, CA (1940) earthquake, and simultaneously, to vertical motions about twice the intensity of that same earthquake.

IV. SEISMIC QUALIFICATION BY ANALYSIS

A. Structural Characteristics

The structural characteristics of the TA-55 facility are such that it acts as a rigid body. The significance of this characteristic is that the site design response spectra apply to all locations within the facility; hence, the site response spectra are also used to design and analyze the equipment within the facility. The site design response spectra show that no amplification occurs for frequencies above 7 Hz. Equipment whose lowest natural frequency exceeds 7 Hz may be qualified by verifying that it is not overstressed by loads produced by the maximum expected site acceleration of 0.33 g's.

B. Equipment Analysis

Each piece of equipment that was qualified by analysis was modeled in a way that appeared to be the most appropriate for that particular unit. The lowest natural frequency was estimated, and it always exceeded 7 Hz. The inertial loads were based on 0.33 g's and were considered to be static.

Stresses and/or deflections were computed and compared to acceptable limits. If the acceptable limits were exceeded, modifications were introduced that would bring the stresses and/or deflections within limits. Special attention was given to connections and to floor mounts to insure that they are adequate to resist potential earthquake loads.

V. DOCUMENTATION AND REPORTING

A. Design Review Board

The documentation of each step in the seismic qualification of equipment was an important aspect of the problem. As part of the LASL Engineering Department's Quality Assurance Program for the construction phase of the TA-55 facility, a Design Review Board was established consisting of specialists in specific portions of design and construction. Each document generated throughout the program that affected design or represented a change from a preset configuration was circulated through the board members for approval and verification that such changes were acceptable. Some documents that were routed in this manner were:

- List of critical seismic equipment with classifications,
- Seismic specifications,
- Vendor submittals,
- Design changes with drawings,
- Seismic test plans, and
- Seismic test reports.

The review of vendor submittals was a positive input to the seismic qualification picture. Some suppliers had misunderstandings regarding the seismic criteria, many of which were resolved by telephone conversations. By attending prebid conferences with vendors, it was also possible to explain details of the seismic specifications that were confusing to those who were facing them for the first time. Soon it was found that more vendors were becoming familiar with the terminology and requirements of the seismic criteria. Specific design recommendations, such as bracing for the overhead sprinkler system, were introduced early in the design phase and were implemented during original plumbing installation, thus avoiding expensive retrofit.

B. Shipping Documents

A standardized form was generated that supplied shipping information and details about receiving inspections for each major equipment item. Model, part identification, and carrier name were included to assist in keeping track of the equipment, some of which was government-furnished, and some contractor-supplied (W/B-O/H).

C. Test Plan

A test plan was composed prior to each seismic test and circulated through the Design Review Board to insure compliance with design requirements. The plan contained a Work Order form that was designed to inform test facility personnel of specific test sequences, instrumentation, and photographic coverage required. A generalized Seismic Qualification Test Plan presented the program requirements. The test plan gave details of the functional checks required to verify test article performance following the seismic event. The test plan used for the emergency generator set is shown in Appendix B.

VI. COST OF SEISMIC QUALIFICATION

A. Cost Summary

The total cost of the seismic qualification program for TA-55, through August 1976, is summarized and presented here, along with a projection of the cost of performing the remaining work. It is assumed that the testing workload is in the process of cresting and will continue at a diminishing rate through 1977 and the first half of 1978. As construction progresses, it is anticipated that some analyses will be required to verify the seismic resistance of components after installation, since the "as built" configuration of critical systems and subsystems must be qualified.

Title II Seismic Charges (FY 1975) (including specification writing, drawing review, and initial test)	\$ 18,000	
	<u> </u>	\$ 18,000
FY 1975 GFE Equipment Qualification	4,000	
FY 1975 Contractor Equipment Qualification	<u>8,400</u>	
		12,400
FY 1976 GFE Equipment Qualification	50,000	
FY 1976 Contractor Equipment Qualification	<u>80,000</u>	
		130,000
FY 1976T GFE Equipment Qualification	4,000	
FY 1976T Contractor Equipment Qualification	<u>17,000</u>	
		21,000
		<u> </u>
Total Seismic Qualification		\$181,400

The numbers reflect all charges, including test engineering support, test coordination, vendor submittal reviews, contractor equipment shipping coordination, and final seismic test report coordination. The following cost figures are projected to occur before completion of the program.

FY 1977 GFE Equipment Qualification	\$ 16,000	
FY 1977 Contractor Equipment Qualification	<u>120,000</u>	
		\$136,000
FY 1978 GFE Equipment Qualification	12,000	
FY 1978 Contractor Equipment Qualification	<u>64,000</u>	
		76,000
		<u> </u>
Projection to Program Completion		\$212,000

REFERENCES

1. "U. S. Atomic Energy Commission Environmental Statement, Plutonium Facility, Los Alamos Scientific Laboratory, New Mexico," WASH-1506 (January 1972).
2. "Report of Geologic, Foundation, Hydrologic and Seismic Investigation, Plutonium Processing Facility, Los Alamos Scientific Laboratory, Los Alamos, New Mexico, for U. S. Atomic Energy Commission," by Dames and Moore, Job Number 0651-120-02 (November 29, 1972).
3. "Technical Specifications for Plutonium Building (Internals), DP Site Plutonium Processing Facility, Site TA-55, Los Alamos, New Mexico," prepared by Fluor Engineers and Constructors, Inc.
4. Personal communication, K. L. Walters, CADP, LASL, to John Anderson, CMB-11, LASL, June 13, 1974.
5. "Specification No. 4401-J-1 Plutonium Building (Internals), Division 1D - Seismic Qualification of Systems and Equipment," prepared by WX-4, LASL, revised July 7, 1975.

APPENDIX A

EQUIPMENT TABLE

Excerpt from Specification No. 4401-J-1 Plutonium Buildings (Internals)
Division 1D - Seismic Qualification of Systems and Equipment
(Revised July 7, 1975)

The following table contains a break-out of each piece of equipment contained in the critical seismic systems. The classification column lists the seismic classification. This made it possible for the purchasing agent to attach the appropriate specification to each equipment item.

FIRE SERVICE WATER SYSTEM

<u>Number</u>	<u>Description</u>	<u>Classification</u>
P-703 (706)	Jockey pump	Class I (Structural)
SP-116	Check valve	Class I (Operative)
SP-118	Gate valve	Class I (Structural)
PCV-701 (704)	Back pressure regulator	Class I (Structural)
PI-701 (704)	Pressure gauge	Class I (Structural)
H-701 A, B (H-704 A, B)	Water heaters	Class I (Structural)*

*Seismic qualification by design.

<u>Number</u>	<u>Description</u>	<u>Classification</u>
V-701 (704)	Water storage tank	Class I (Structural)* (P Package)
	8-in. Valve (between 8- and 12-in. lines)	Class I (Operative)
HV-701 (711)	Manual butterfly valve	Class I (Operative)
HV-702 (712)	Manual butterfly valve	Class I (Operative)
HV-707 (710)	Manual butterfly valve	Class I (Operative)
HV-704 (714)	Manual butterfly valve	Class I (Operative)
P-701 (705)	Diesel-driven pump	Class I (Operative)†
HV-706 (709)	Manual butterfly valve	Class I (Operative)
P-702 (704)	Electric fire pump	Class I (Structural)†
P-701 CR (705 CR)	Diesel pump controller	Class I (Operative)†
	Sprinkler systems	Class I (Operative)
	Associated piping, including underground loop	Class I (Structural)*
	Associated valves in underground loop	Class I (Operative)

AIR SAMPLING (INTEGRATING) SYSTEM (EMERGENCY STACK MONITOR ONLY)

<u>Number</u>	<u>Description</u>	<u>Classification</u>
J-4243,4 (5)	Air circulating pump w/electric motor	Class I (Operative)
	Mounting for air pump	Class I (Structural)*
	Air plumbing (probe/pump)	Class I (Structural)*
	Air pump wiring (pump/battery)	Class I (Operative)
	Air pump on/off trigger	Class I (Operative)
	Air sampling probe	Class I (Structural)
	Battery and inverter	Class I (Operative)

EMERGENCY LIGHTING

<u>Number</u>	<u>Description</u>	<u>Classification</u>
	Light and battery unit w/triggering system	Class I (Operative)
	Mounting	Class I (Structural)*

* Seismic qualification by design.

† Furnished by LASL (GFE).

HYDROGEN AND METHANE GAS (INSIDE PU BUILDING)

<u>Number</u>	<u>Description</u>	<u>Classification</u>
J-0086	Hydrogen and methane gas lines	Class II (Structural)*

GLOVE AND DROP BOX SUPPORTS

<u>Number</u>	<u>Description</u>	<u>Classification</u>
J-9900	New drop box supports	Class II (Structural)*†
J4-9900	Existing (moved from old DP drop box supports)	Class II (Structural)*†

PROCESS AND INDUSTRIAL WASTE (OUTSIDE PU BUILDING)

<u>Number</u>	<u>Description</u>	<u>Classification</u>
J-0086 Frame 4	4 ea. 3/4-in. Ball valves	Class II (Operative)*
	4 ea. 2-in. Ball valves	Class II (Operative)*
	4 ea. 1-1/2-in. Ball valves	Class II (Operative)*
	2 ea. 2-in. Pipe	Class II (Structural)*
	2 ea. 1-1/2-in. Pipe	Class II (Structural)*
	2 ea. 1-1/2-in. to 3/4-in. Tee reducer	Class II (Structural)*
	4 ea. 3/4-in. Pipe	Class II (Structural)*
	2 ea. 2-in. to 3/4-in. Tee reducer	Class II (Structural)*

NI-CARBONYL GAS SYSTEM

<u>Number</u>	<u>Description</u>	<u>Classification</u>
J-0122 Det-77	Piping	Class II (Structural)*

HYDROGEN FLUORIDE

<u>Number</u>	<u>Description</u>	<u>Classification</u>
	Piping	Class II (Structural)*

CONTINUOUS AIR MONITORING (CAMS)

<u>Number</u>	<u>Description</u>	<u>Classification</u>
	Stack Monitors	
	2 ea. Cam units	Class I (Operative)
	2 ea. Pumps	Class I (Operative)

* Seismic qualification by design.

† Furnished by LASL (GFE).

<u>Number</u>	<u>Description</u>	<u>Classification</u>
	Area Monitors	
	4 ea. Cam units, emergency power	Class II (Operative)
	4 ea. Pumps	Class II (Operative)

DATA ACQUISITION SYSTEM

<u>Number</u>	<u>Description</u>	<u>Classification</u>
	Multiplexing System	
	Field Multiplex unit	Class I (Operative)†
	Cable and wire	Class I (Operative)†
	Central control unit	Class I (Operative)†
	Control room multiplex	Class I (Operative)†
	Data Logger System	
	Computer processing unit	Class I (Operative)†
	Extended memory	Class I (Operative)†
	Disks	Class I (Operative)†
	Hard copy terminal	Class I (Operative)†
	Printer plotter	Class I (Operative)†
	Magnetic tape	Class I (Operative)†
	Interprocessor communi- cation	Class I (Operative)†
	Cabling	Class I (Operative)†
	Support stand	Class I (Structural)†*
	Pedestal floor	Class I (Structural)

COMPRESSED AIR SYSTEM

<u>Number</u>	<u>Description</u>	<u>Classification</u>
C-602A, B, C	3 ea. Compressors	Class I (Operative)
J-0083, J-0086	3 ea. Control panels	Class I (Operative)
E-605A, B, C	3 ea. Aftercoolers	Class I (Operative)
V-611	Air receiver	Class I (Operative)
ME-617	Air dryer	Class I (Operative)
PCV-211	Isolation valve	Class I (Operative)

* Seismic qualification by design.

† Furnished by LASL (GFE).

<u>Number</u>	<u>Description</u>	<u>Classification</u>
	2 ea. Remote pressure switches	Class I (Operative)
	Emergency cooling valves	Class I (Operative)
	Associated piping	Class I (Structural)*
<u>EMERGENCY POWER SYSTEM</u>		
<u>Number</u>	<u>Description</u>	<u>Classification</u>
G-612 (Spec. J-1, Div. 15F)	Engine generator unit	Class I (Operative)
	Control panel (generator)	Class I (Operative)
	Air bottle starting unit	Class I (Operative)
	Battery starting unit	Class I (Operative)
G-612-VI	200-gal Day tank	Class I (Structural)*
V-609	2500-gal Underground tank	Class I (Structural)*
G-612-P1	Fuel pump	Class I (Operative)
	Piping system	Class I (Structural)*
	Air intake and cooling unit	Class I (Operative)
	Generator building structure	Class I (Structural)*
	Electrical feeders	Class I (Structural)*
	Transformers (north and south)	Class I (Operative)
	Panel boards (north and south)	Class I (Operative)
EE-635	Station batteries and chargers	Class I (Operative)
EE-637	Station batteries and chargers	Class I (Operative)
EE-660	Station batteries and chargers	Class I (Operative)
	Battery Banks	
	Batteries	Class I (Operative)
	Racks	Class I (Structural)
	Connectors	Class I (Operative)
	Control Panel (Dual)	
	Inverter (solid state)	Class I (Operative)
	Charger (converter)	Class I (Operative)
	Relays	Class I (Operative)
	Panel Board (Distribution)	
	Relays	Class I (Operative)
	Load shedding, timers, etc.	Class I (Operative)

* Seismic qualification by design.

<u>Number</u>	<u>Description</u>	<u>Classification</u>
	Distribution System	
	Multiple feeders with separate lines and breakers for each load	Class I (Operative)*

HEATING AND VENTILATING SYSTEM

(Spec. J-1, Div. 15B, Drawings J-3243, J-3244)

<u>Number</u>	<u>Description</u>	<u>Classification</u>
	Zone 2 Supply (North)	
J-3243	Duct (inlet to valve)	Class I (Structural)*
HCV-832	Shutoff valve	Class I (Operative)
HY-832	Activator, shutoff valve	Class I (Operative)
	Filter plenum	Class II (Structural)*
HV-809A, B	2 ea. Blowers	Class II (Operative)
CP-814	Control panel, controllers, and sensors	Class I (Operative)
	Associated ductwork	Class II (Structural)*
	Zone 3 Supply (North)	
J-3243	Duct (inlet to valve)	Class I (Structural)*
HCV-833	Shutoff valve	Class I (Operative)
HY-833	Actuator, shutoff valve	Class I (Operative)
	Filter plenum	Class II (Structural)*
HV-840	Blower	Class II (Operative)
CP-814	Control panel, controllers, and sensors	Class I (Operative)
	Associated ductwork	Class II (Structural)*
	Zone 2 Supply (South)	
J-3244	Duct (inlet to valve)	Class I (Structural)*
HCV-882	Shutoff valve	Class I (Operative)
HY-882	Actuators, shutoff valve	Class I (Operative)
	Filter plenum	Class II (Structural)*
HV-810A, B	2 ea. Blowers	Class II (Operative)
CP-824	Control panel, controllers, and sensors	Class I (Operative)
	Associated ductwork	Class II (Structural)*

* Seismic qualification by design.

<u>Number</u>	<u>Description</u>	<u>Classification</u>
Zone 3 Supply (South)		
J-3244	Duct (inlet to valve)	Class I (Structural)*
HCV-883	Shutoff valve	Class I (Operative)
HY-883	Actuators, shutoff valve	Class I (Operative)
	Filter plenum	Class II (Structural)*
HV-841	Blower	Class II (Operative)
CP-824	Control panel, controllers, and sensors	Class I (Operative)
	Associated ductwork	Class II (Structural)*
Zone 2 Recirculation (North) (Pu-239 Wing)		
J-3243	Plena	Class II (Structural)*
HV-803	Blower	Class II (Operative)
HV-804	Blower	Class II (Operative)
HV-838	Shutoff damper	Class II (Operative)
HY-838	Actuator, shutoff damper	Class II (Operative)
HV-839	Shutoff damper	Class II (Operative)
HY-839	Actuator, shutoff damper	Class II (Operative)
CP-817	Control panel, controllers, and sensors	Class I (Operative)
	Associated ductwork	Class II (Structural)*
Zone 2 Recirculation (North) (Pu-238 Wing)		
J-3243	Plena	Class II (Structural)*
HV-801	Blower	Class II (Operative)
HV-802	Blower	Class II (Operative)
HV-837A	Shutoff damper	Class II (Operative)
HY-837A	Actuator, shutoff damper	Class II (Operative)
HV-837B	Shutoff damper	Class II (Operative)
HY-837B	Actuator, shutoff damper	Class II (Operative)
CP-818	Control panel, controllers, and sensors	Class I (Operative)
	Associated ductwork	Class II (Structural)*

* Seismic qualification by design.

<u>Number</u>	<u>Description</u>	<u>Classification</u>
Zone 2 Recirculation (South) (Recycle)		
J-3244	Plena	Class II (Structural)*
HV-807	Blower	Class II (Operative)
HV-808	Blower	Class II (Operative)
HV-888	Shutoff damper	Class II (Operative)
HY-888	Actuator, shutoff damper	Class II (Operative)
HV-889	Shutoff damper	Class II (Operative)
HY-889	Actuator, shutoff damper	Class II (Operative)
CP-826	Control panel, controllers, and sensors	Class I (Operative)
	Associated ductwork	Class II (Structural)*
Zone 2 Recirculation (South) (Metal Fabrication)		
J-3244	Plena	Class II (Structural)*
HV-805	Blower	Class II (Operative)
HV-806	Blower	Class II (Operative)
HV-887A	Shutoff damper	Class II (Operative)
HY-887A	Actuator, shutoff damper	Class II (Operative)
HV-887B	Shutoff damper	Class II (Operative)
HY-887B	Actuator, shutoff damper	Class II (Operative)
CP-821	Control panel, controllers, and sensors	Class I (Operative)
	Associated ductwork	Class II (Structural)*
Zone 2 Bleed-off (South)		
J-3244	2 ea. Filter plena	Class I (Structural)*
	Ducting (filter plena to stack)	Class I (Structural)*
FA-822A	Blower	Class I (Operative)
FA-822B	Blower	Class I (Operative)
FA-823	Blower	Class I (Operative)
CP-827	Control panel, controllers, and sensors	Class I (Operative)
HV-857	Damper	Class II (Operative)
HY-857	Actuator	Class II (Operative)

* Seismic qualification by design.

<u>Number</u>	<u>Description</u>	<u>Classification</u>
HV-859	Damper	Class II (Operative)
HY-859	Actuator	Class II (Operative)
HV-860	Damper	Class II (Operative)
HY-860	Actuator	Class II (Operative)
HV-862	Damper	Class II (Operative)
HY-862	Actuator	Class II (Operative)
HV-879	Damper	Class II (Operative)
HY-879	Actuator	Class II (Operative)
HV-880	Damper	Class II (Operative)
HY-880	Actuator	Class II (Operative)
HV-881	Damper	Class II (Operative)
HY-881	Actuator	Class II (Operative)
Zone 2 Bleed-off (North)		
J-3243	2 ea. Filter plena	Class I (Structural)*
	Ducting (filter plena to stack)	Class I (Structural)*
FA-820A	Blower	Class I (Operative)
FA-820B	Blower	Class I (Operative)
FA-821	Blower	Class I (Operative)
CP-812	Control panel, controllers, and sensors	Class I (Operative)
HV-807	Damper	Class II (Operative)
HY-807	Actuator	Class II (Operative)
HV-809	Damper	Class II (Operative)
HY-809	Actuator	Class II (Operative)
HV-810	Damper	Class II (Operative)
HY-810	Actuator	Class II (Operative)
HV-812	Damper	Class II (Operative)
HY-812	Actuator	Class II (Operative)
HV-829	Damper	Class II (Operative)
HY-829	Actuator	Class II (Operative)
HV-830	Damper	Class II (Operative)
HY-830	Actuator	Class II (Operative)
HV-831	Damper	Class II (Operative)

* Seismic qualification by design.

<u>Number</u>	<u>Description</u>	<u>Classification</u>
HY-831	Actuator	Class II (Operative)
	Zone 1 Exhaust (North - 200 Area)	
J-3243(7)	Ducting (stack to plena)	Class I (Structural)*
PDV-815A	Shutoff valve	Class I (Operative)
HY-815A	Actuator	Class I (Operative)
PDV-815B	Shutoff valve	Class I (Operative)
HY-815B	Actuator	Class I (Operative)
HVP-850	Blower	Class I (Operative)
HVP-851	Blower	Class I (Operative)
	2 ea. Plena	Class I (Structural)*†
HV-816A	Shutoff valve	Class I (Operative)
HY-816A	Actuator	Class I (Operative)
HV-816B	Shutoff valve	Class I (Operative)
HY-816B	Actuator	Class I (Operative)
PDV-814A	Bypass valve	Class I (Operative)
PDY-814A	Actuator	Class I (Operative)
PDV-814B	Bypass valve	Class I (Operative)
PDY-814B	Actuator	Class I (Operative)
	Duct to boxes	Class I (Structural)*
CP-813	Control panel, controllers and sensors	Class I (Operative)
	Zone 1 Exhaust (North - 100 Area)	
J-3243(8)	Ducting (stack to plena)	Class I (Structural)*
PDV-821A	Shutoff valve	Class I (Operative)
HY-821A	Actuator	Class I (Operative)
PDV-821B	Shutoff valve	Class I (Operative)
HY-821B	Actuator	Class I (Operative)
PDV-820A	Bypass valve	Class I (Operative)
PDY-820A	Actuator	Class I (Operative)
PDV-820B	Bypass valve	Class I (Operative)
PDY-820B	Actuator	Class I (Operative)
HVP-852	Blower	Class I (Operative)
HVP-853	Blower	Class I (Operative)

* Seismic qualification by design.

† Furnished by LASL (GFE)

<u>Number</u>	<u>Description</u>	<u>Classification</u>
	2 ea. Plena	Class I (Structural)*†
HV-822A	Shutoff valve	Class I (Operative)
HY-822A	Actuator	Class I (Operative)
HV-822B	Shutoff valve	Class I (Operative)
HY-822B	Actuator	Class I (Operative)
	Ducting (boxes to plena)	Class I (Structural)*
CP-816	Control panel, controllers, and sensors	Class I (Operative)
Zone 1 Exhaust (South - 400 Area)		
J-3244(7)	Ducting (exhaust to plena)	Class I (Structural)*
PDV-865A	Shutoff valve	Class I (Operative)
HY-865A	Actuator	Class I (Operative)
PDV-865B	Shutoff valve	Class I (Operative)
HY-865B	Actuator	Class I (Operative)
PDV-864A	Bypass valve	Class I (Operative)
PDY-864A	Actuator	Class I (Operative)
PDV-864B	Bypass valve	Class I (Operative)
PDY-864B	Actuator	Class I (Operative)
HVP-856	Blower	Class I (Operative)
HVP-857	Blower	Class I (Operative)
	2 ea. Plena	Class I (Structural)*†
HV-866A	Shutoff valve	Class I (Operative)
HY-866A	Actuator	Class I (Operative)
HV-866B	Shutoff valve	Class I (Operative)
HY-866B	Actuator	Class I (Operative)
	Ducting (boxes to plena)	Class I (Structural)*
CP-825	Control panel, controllers, and sensors	Class I (Operative)
Zone 1 Exhaust (South - 300 Area)		
J-3244(8)	Ducting (exhaust to plena)	Class I (Structural)*
PDV-871A	Shutoff valve	Class I (Operative)
HY-871A	Actuator	Class I (Operative)
PDV-871B	Shutoff valve	Class I (Operative)

* Seismic qualification by design.

† Furnished by LASL (GFE).

<u>Number</u>	<u>Description</u>	<u>Classification</u>
HY-871B	Actuator	Class I (Operative)
PDV-870A	Bypass valve	Class I (Operative)
PDY-870A	Actuator	Class I (Operative)
PDV-870B	Bypass valve	Class I (Operative)
PDY-870B	Actuator	Class I (Operative)
HVP-854	Blower	Class I (Operative)
HVP-855	Blower	Class I (Operative)
	2 ea. Plena	Class I (Structural)*†
HV-872A	Shutoff valve	Class I (Operative)
HY-872A	Actuator	Class I (Operative)
HV-872B	Shutoff valve	Class I (Operative)
HY-872B	Actuator	Class I (Operative)
	Ducting (boxes to plena)	Class I (Structural)*
CP-822	Control panel, controllers, and sensors	Class I (Operative)
Zone 1 Supply (North)		
J-3243(4)	Ducting	Class I (Structural)*
DR-870	Air dryer	Class I (Structural)*†
DR-871	Air dryer	Class I (Structural)*†
CP-815	Control panel, controllers, and sensors	Class I (Operative)
PDV-805	Shutoff valve	Class I (Operative)
PDY-805	Actuator	Class I (Operative)
PDV-834	Shutoff valve	Class I (Operative)
PDY-834	Actuator	Class I (Operative)
Zone 1 Supply (South)		
J-3244(4)	Ducting	Class I (Structural)*
FA-826	Blower	Class I (Operative)
DR-872	Air dryer	Class I (Structural)*†
DR-873	Air dryer	Class I (Structural)*†
CP-826	Control panel, controllers, and sensors	Class I (Operative)
PDV-855	Shutoff valve	Class I (Operative)

* Seismic qualification by design.

† Furnished by LASL (GFE).

<u>Number</u>	<u>Description</u>	<u>Classification</u>
PDY-855	Actuator	Class I (Operative)
PDV-892	Shutoff valve	Class I (Operative)
PDY-892	Actuator	Class I (Operative)
PDV-884	Shutoff valve	Class I (Operative)
PDY-884	Actuator	Class I (Operative)
	Zone 3 Exhaust	
	Filter plena	Class I (Structural)*
	Ducting (from filters to exhaust)	Class I (Structural)*
	H&V Control Power System	Class I (Operative)*
J-3300	Control Room Recirculation System	
FA-880A, B	2 ea. Fan	Class I (Operative)
FA-881	Fan	Class I (Operative)
	Ducting	Class I (Structural)*

ISOLATION MOUNTS

<u>Description</u>	<u>Classification</u>
Mounts	Class per equipment (Structural)*
Tiedowns	Class per equipment (Structural)*

* Seismic qualification by design

APPENDIX B

SEISMIC TEST PLAN DIESEL-DRIVEN EMERGENCY GENERATOR

This appendix presents the Test Plan for the Diesel-driven Emergency Generator and is divided into the following exhibits.

Exhibit B-1	Test Procedure
Exhibit B-2	General Test Requirements
Exhibit B-3	Receiving/Shipping Inspection Sheet
Exhibit B-4	Work Order
Exhibit B-5	Test Schedule
Exhibit B-6	Instrumentation Location

EXHIBIT B-1

TEST PROCEDURE

LASL ENGINE-GENERATOR SET

PRESTART INSPECTION

1. Check overall engine condition. Check liquid levels.
2. Generator: Check overall condition. Check temporary connections for safety and insulation.
3. Control panel: Check electrical connections between generator and breaker panel.
4. Breaker panel: Check electrical connections between generator and control panel.
5. Load bank: Connect to breaker panel, 3-phase connection with ground to generator set. All voltage change switches are to be in the "UP" or 480-V position.
6. Set voltage regulator to "LOW" position.

RUNNING INSPECTION

Check engine instruments and generator instruments. Visually check engine-generator operation. Allow engine to run without load and check speed control of governor. Check voltage regulator operation and bring voltage up to 480 V. Check underfrequency operation. Check safety shutdown operation. Stop engine, make a visual inspection, and make any corrections needed.

FUNCTIONAL INSPECTION

Bring engine to speed, check instruments, and if all is normal, apply a load of approximately 64 kW. The load bank is resistive, unity power factor. One leg will carry fan motors and will indicate more load than the other legs. The 64 kW will be 77 A. Allow the engine-generator to remain in this stable condition and log instrument readings.

Apply an additional load of 64 kW, or bring the amperage to approximately 154 A. Make notations in the log.

Apply final load to the capacity of the load bank. Make notations in the log. Vary load up and down to note reactance of the governor and the regulator. Check total operation. This will be the final run and will continue, as needed to verify operation.

ACCESSORIES

Check operation of engine-mounted accessories, water heaters, lube heaters, pre-lube pump, day tank, and hand pump. An independent power source will have to be used.

EXHIBIT B-2

SECTION I — GENERAL TEST REQUIREMENTS

I.1.0 OBJECTIVES

- I.1.1 Seismic qualification of LASL TA-55 facility hardware by testing to specific postulated earthquake shock levels, as determined by the class of service assigned to each hardware unit.
- I.1.2 Determination and identification of resonances in the seismic frequency range of 1 - 35 Hz (optional objective).

I.2.0 REFERENCES

- I.2.1 Test Specifications 4401-J-1, Plutonium Building Internals, April 23, 1975.
- I.2.2 Extract from Ref. I.2.1, Definitions of Earthquakes, Earthquake Data for Class I, Operative Service.
- I.2.3 Resonance Search/Seismic Qualifications, extract from LASL WX-4-63 office memo, dated January 20, 1976.
- I.2.4 Work Order, Seismic Testing, LASL, WX-4 (form).
- I.2.5 Inspection Report, Seismic Hardware, LASL WX-4 (form).
- I.2.6 Description of shock equipment and capabilities employed in seismic testing at contractor's facility.

I.3.0 INITIATION OF TESTING

- I.3.1 The work order (Ref. I.2.4), with the upper section properly executed and signed, is the authorization document. It also serves as the accompanying document through testing for recording specifics of the testing procedures.

I.4.0 CLASSIFICATIONS AND REQUIREMENTS FOR HARDWARE (REF. I.2.1)

- I.4.1 Class I Operational requires three OBE and one DBE sequence of tests. Class I Structural requires three OBE and one DBE sequence of tests. Class II Operational requires three OBE and no DBE sequence of tests. Class II Structural requires three OBE and no DBE sequence of tests.
- I.4.2 Resonance search and identification: Resonance search(es) will be performed by the random noise technique (Ref. I.2.3), when called for by the work order, either before, during, or after time-history earthquake sequences.

I.5.0 INSPECTIONS, SHORTAGES, AND DAMAGES

- I.5.1 The seismic testing contractor will perform inspections upon receipt of hardware and again after testing, at the time of reshipment to LASL, using inspection report (Ref. I.2.5) as documentation.
- I.5.2 LASL will be responsible for supplying shortages and correcting deficiencies prior to installation on the testing tables.
- I.5.3 Inspection report (Ref. I.2.5), bottom portion, will be used for inspection and accountability after reshipment of hardware to LASL.

I.6.0 PREPARATION FOR TESTING

- I.6.1 Design of mountings and appurtenances to meet or simulate operating conditions shall be the joint endeavor of the seismic testing contractor and LASL, but require LASL WX-4 approval.
- I.6.2 Fabrication of mountings and appurtenances shall be the responsibility of the seismic testing contractor.

I.7.0 WAIVERS

- I.7.1 Each waiver of requirement known in advance of testing should be submitted to LASL WX-4 for approval prior to testing.
- I.7.2 Unanticipated nonconformance instances should be reported to LASL WX-4 for waiver approval prior to continuation of testing.
- I.7.3 Each waiver should be noted on the work order and discussed in the report.

I.8.0 CONDUCT OF TESTS

- I.8.1 The tests will be performed by and are the responsibility of the seismic testing contractor.
- I.8.2 Functional performance data will be taken, recorded, and evaluated prior to, during, or after testing, as specified by the work order.
- I.8.3 Instrumentation used in taking data will be identified with the data taken, whether the data is processed or filed.
- I.8.4 Description of test configurations, accessories, or other items, as necessary, may be photographic, illustrations, or by prose--but not redundant.
- I.8.5 Seismic testing contractor's test plan or operating procedure, if used, should be submitted as part of the contractor's test report, but neither is required.

I.9.0 WITNESSING OF TESTS

- I.9.1 LASL WX-4 representative(s) shall witness each test unless waived.

I.10.0 ADDITIONAL TESTING

- I.10.1 Resonance search determinations may be required prior to or following time-history earthquake sequences. Such requirements will be annotated on the work order.
- I.10.2 When resonances in the 1 - 35 Hz range are observed, they will be documented by spectral density plot(s).
- I.10.3 Resonances will be corrected only when disqualification is predicted or occurs. Complete retesting is required after correction.

I.11.0 REPORT AND DOCUMENTATION

- I.11.1 The seismic testing contractor will furnish LASL four copies of the summary test report, including the following:
 - A. Work order sheets, executed, as appropriate.
 - B. Data sheets, as developed during testing.
 - C. Processed data and results.
 - D. Listing of nonprocessed data and file record of this data.
 - E. Discussion of testing, noncompliances, and variances.
 - F. Brief description of conduct of tests, including photographic record.
 - G. Certification of qualification/disqualification of items tested.
 - H. Discussion of resonances, where appropriate.
 - I. Modifications made to equipment or hardware tested.
 - J. Contractor's test or operating plan, if used.

EXHIBIT B-3

SEISMIC RECEIVING/SHIPPING INSPECTION

Inspection at test site

Site U.C. Richmond

Date Received September 1, 1976 Carrier C&H Transport Chgs. ppd/coll Prepaid

Hardware to be Tested MG set for TA-55 Wt. 24,240 lbs

Vendor Sandia Detroit Diesel

Address Albuquerque, NM

Properly Labeled Yes Outside Visible Damage None

Opened by _____ Date September 1, 1976

Contents: Visible Damage None

Discrepancies None

Part/Item No.	Description	Received	Shipped
MOD 91237305 MOD E7014DD 4 ea. Group 8-D MOD A48-20-24V MOD 76-488 ITE S.O. 50565-D1	Motor generator set, S/N 12E 4230 S/N 1-C-76 Cables, Variac, X-former, circuit breaker Batteries Charger, S/N B72804 Generator controller, S/N 7600807 Switch gear		

Inspected (In) _____ Date September 1, 1976

Inspected (Out) _____ Date _____

WX-4 INSPECTION (Post Test & Return to LASL)

Delivered at TA-55 By Common Carrier Date _____

Visible Damage _____

Other Inspection/Discrepancies None

Returned to Custody of _____ Sig. _____ Date _____

Stored at _____

Signature (WX-4) R. H. Shaw Date _____

Use separate sheet for additional information if required.

EXHIBIT B-4

WORK ORDER
SEISMIC TESTING
LASL-WX-4

REQUESTOR: Wallace/Brown-Olds/Howard DATE: 9/14/76
TEST SITE: University of California Earthquake Engineering Research Center, Richmond, CA
PROJECT: TA-55 Internals Seismic Qualification TEST NO.: _____
SEISMIC LEVEL: Cl.I Operative
SPECIMEN: Diesel engine/generator, batteries, charger and accessories
PART NO.: 91237305/E7014DD, Group 8D, A48-20-24V et al.
MFR: Detroit Diesel/Delco (Vendor - Sandia Detroit Diesel) S/N: See inspection form
SIGNATURE: _____ WX-4: R. H. Shaw

SEC. II SPECIFIC REQUIREMENTS

SCHEDULED TEST DATE: Nov.-Dec. 1976

PHOTO: 8 x 10 color; color motion pictures (by LASL ISD-7)
DOCUMENTATION REQD.: Per General Requirements (attached)
SEISMIC TESTS: 3 ea. OBE and 1 ea. DBE per axis
RESONANCE SEARCH: Required, horizontal and vertical, per contractor's technique
FUNCTIONAL TEST: Pre- and post-seismic sequences, per LASL communication, WX-4-439 attachment.

INSTRUMENTATION: 11 accelerometers, tentatively located per attached sketch.

WAIVERS: _____

APPROVAL OF WAIVERS: _____ DATE: _____
TESTS WITNESSED BY: P. R. Pelletier / R. H. Shaw DATE: 12 JAN 1977

USE SEPARATE SHEET FOR ADDITIONAL INFORMATION IF REQUIRED

EXHIBIT B-5

TEST SCHEDULE

TA-55 DIESEL-DRIVEN EMERGENCY GENERATOR

- Day 1 Mount diesel generator set on the table with radiator facing windows in laboratory. Also mount battery box and generator control panel, but not the battery charger or the breaker-transformer unit. Begin electrical connections to diesel generator and installation of accelerometers.
- Day 2 Complete work started on Day 1. Calibrate accelerometers and check the operation of the digital and analog data acquisition systems.
- Day 3 Perform functional test on diesel generator set. During test, record six selected accelerometers on paper chart continuously and record all the accelerometers on the digital acquisition system for 20-s duration. Perform five tests, using the following table motions:
1. OBE at 50% intensity on both the horizontal and vertical axes simultaneously. (This test is to check performance of shaking table and data acquisition systems.)
 2. OBE at 100% intensity on both the horizontal and vertical axes simultaneously.
 3. Repeat OBE at 100% intensity.
 4. Repeat OBE at 100% intensity.
 5. DBE at 100% intensity on both the horizontal and vertical axes simultaneously. Repeat functional test on diesel generator set.
- Day 4 Search for natural frequencies by resonance testing in the frequency range 1-20 cps. During resonance testing, the table acceleration amplitudes may not exceed 0.1 g's.
- Day 5 Rotate diesel generator set so that the radiator is facing control room in laboratory.
- Day 6 Perform functional test on diesel generator. Repeat sequence of earthquake motions described under Day 3. Repeat functional test on diesel generator.
- Day 7 Resonance testing as described under Day 4, except search is to be limited to horizontal motion only.
- Day 8 Demonstrations for observers and photographer.
- Day 9 Remove generator set and associated equipment from table and prepare for shipping.

EXHIBIT B-6
INSTRUMENTATION LOCATION

Run: 050177:L

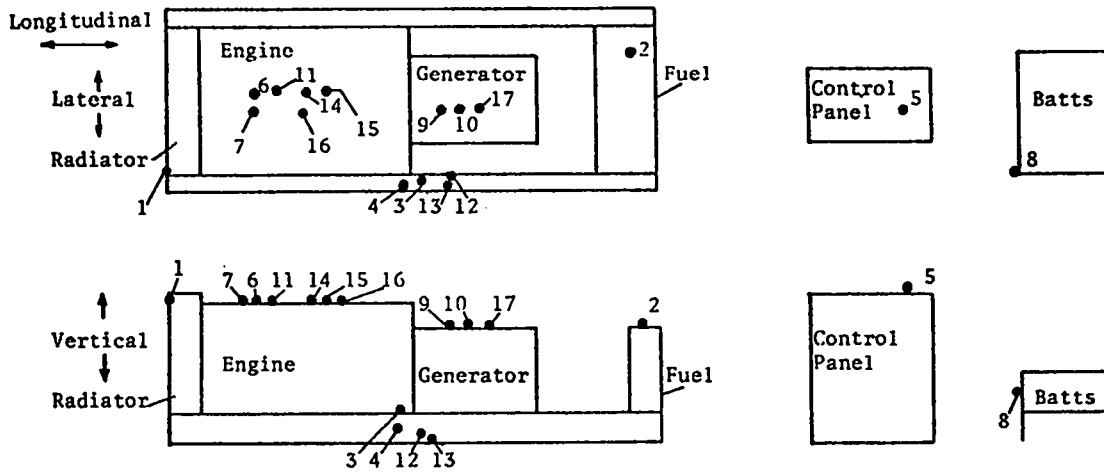


TABLE - VERTICAL AND LATERAL

EERC		
<u>Accelerometer Number</u>	<u>Location</u>	<u>Record</u>
1	Radiator - Lateral	Channel 36
2	Fuel - Lateral	Channel 37
3	Frame - Lateral	Channel 38
4	Frame - Vertical	Channel 39
5	Control Panel - Longitudinal	Channel 40
6	Engine - Longitudinal	Channel 41
7	Engine - Vertical	Channel 42
8	Batts - Longitudinal	Channel 43
9	Generator - Lateral	Channel 44
10	Generator - Vertical	Channel 45
11	Engine - Vertical	Channel 46
Calibration - Approximately 2 V/g's (use individual calibration).		
WSMR		
<u>Accelerometer Number</u>	<u>Location</u>	<u>Record</u>
12(1)	Frame - Lateral	
13(2)	Frame - Vertical	
14(3)	Engine - Lateral	
15(4)	Engine - Vertical	
16(5)	Engine - Longitudinal	
17(6)	Generator - Lateral	
Calibration - 500 mV/g's.		